

## Tim's Chat

Hi Folks – Here is a summary of what I have been doing over the past six months, as Clinical Lead, on your behalf.

In April, I attended the first day of the **RCPCH Annual Conference** in Birmingham, the first held jointly with the RCN; an innovative approach bringing children's nursing and medical care together under one roof. Professor Al Aynsley Green, highlighting the lack of quality metrics to support children's care planning, and the need for paediatric care to be more focussed towards the community, were the two key messages I took away from the day.

**Julia** and I met with **Kate Burley**, Network Manager at the SCN, to discuss how the roles of our two organisations could complement each other in developing services for children and young people. We discussed the priority areas for the SCN over the coming months. The important areas of Transition, Mental Health and CAMHS developments and supporting Safeguarding leads across the region were considered. **Mary Montgomery's** position as Interim Clinical Director for the SCN has been secured – until March 2016 - good news for us all.

PiP have agreed to facilitate a **Children's Forum for Commissioners**. This Forum aims to provide peer support for Commissioners, share information and best practice so that regional work can be co-ordinated.

In July, I presented at the **SCN Paediatric Shared Learning** event. I considered Urgent Care planning for CYP and the role of Paediatric Triage as an aid to providing effective, safe primary care for young people. This was very useful day - lots of shared learning and ideas, touching on issues such as Asthma and Sepsis – key topics for us all.

The first planning meeting for the next edition of the **Paediatric Guidelines** was held in Stoke in August. I outlined the need to expand the scope of the guidelines beyond in-patient care, to encompass the expansion of whole-system

pathways for CYP's care. Many of our children with long-term conditions are spending the majority of their lives in their communities and will need their health care to be provided much closer to home and their schools. We hope to recruit primary care physicians to contribute to this important work: **Is anyone interested?**

**Dr Jackie Cornish** – National Clinical Director for CYP at NHS England met with me to discuss the Dudley CYP Vanguard project and the role PiP could play in supporting joint primary / secondary care training to enhance the multi – disciplinary team approach. This is central to the Dudley MCP project and we explored how the process could effectively support transition and aid young people to gain the most from their educational opportunities.

**Professor Steve Cropper** and I presented at the Nuffield Trust workshop in September: **'New Models for delivering health care services in the Five Year Forward View - what about the children?'** This was a great opportunity to share good practice and promote PiP's work to a wider audience – feedback in my next chat.

It was a pleasure to welcome **Mollie Wilson** to the UK in August. Mollie is CEO of the Paediatric Society in New Zealand. We explored some of the issues addressing services for our children and young people, agreeing that there are many similar challenges and opportunities facing us - despite our different environments!

Finally, we are looking forward to welcoming you to the **Annual Conference on 15th October**.

"An investment in knowledge pays the best interest"  
Benjamin Franklin



### PiP Member Organisations

Birmingham Children's Hospital NHS FT • Black Country Partnership NHS FT • Burton Hospitals NHS FT • Dudley CCG • Dudley Group NHS FT  
 East Cheshire NHS Trust • George Eliot Hospital NHS Trust • Heart of England NHS FT  
 Robert Jones & Agnes Hunt Orthopaedic & District Hospital NHS FT  
 Shropshire Community NHS Trust • Shropshire CCG • South Staffordshire & Shropshire Healthcare NHS FT  
 The Royal Wolverhampton Hospitals NHS Trust • The Shrewsbury & Telford Hospital NHS Trust  
 University Hospital of North Midlands NHS Trust • University Hospitals Coventry & Warwickshire NHS Trust  
 Walsall Healthcare NHS Trust • Worcestershire Acute Hospitals NHS Trust



The last Board meeting was held on 15th July.

Recognising that it is difficult for Members to travel and attend the meetings, we used Skype - for the first time.

Two of the young Health Champions from Shropshire, Abbie and Laura and Karen Higgins the Project Manager attended.

Helen Codd, Community Engagement Officer at Dudley CCG gave a presentation "Our experience of engaging with children and young people" which focussed on the #MeFestival held in November 2014. The aim of the #MeFestival is to 'empower young people to develop the skills and confidence to manage their health and happiness at the same time as having Fun!'.  
The #MeFestival is funded & co-ordinated by Dudley CCG and the overall aim is to hold an annual event.

Tim Horsburgh went through the PiP Work Plan for 2015 / 16 - the main work streams identified as priority areas for PiP to focus on. One of the most important areas is working with partners to ensure that the experiences of children and young people influence the provision of care and service developments.

The discussions were wide ranging and Abbie and Laura raised some interesting points - particularly the importance of Confidentiality.

The discussions were wide ranging and Abbie and Laura raised some interesting points - particularly the importance of Confidentiality.

Laura will be leading on a project for young people with Type 2 Diabetes. The Health Champions have written, directed and performed in a film about young people with Diabetes Type 1; this is being used in schools in Shropshire to help educate teachers about the needs of young people with Diabetes.

This film can be accessed on You Tube:

<https://www.youtube.com/watch?v=TRvAgJV7ddM>

The date of the next #MeFestival is Thursday, 26th November at Himley Hall, Shropshire. For information about this please contact Helen: [Helen.codd@dudleyccg.nhs.uk](mailto:Helen.codd@dudleyccg.nhs.uk)



Karen Higgins and Health Champions, Laura and Abbie, participating in the Board meeting

## To Skype or not to Skype?

Dr Dennis Wilkes, Consultant in Public Health (Birmingham) attended the Board meeting by Skype. He said: "Attending meetings is more than just the material to be discussed. Much of the value of meeting is the relationships refreshed or made and the reading of the 'non-verbal' cues. Would I get this using Skype? I tried it for the first time at the Board meeting and was surprised how much of that 'soft intelligence' was available. There was a presentation by young people which would not have been so interesting by viewing a document or circulating a presentation - listening to them was really helpful. I will certainly do Skype attendance again".

There will be the opportunity to use Skype at the next Board meeting.

The dates of the 2016 Board meetings are:

Wednesday, 9th March and Thursday, 9th June  
Meetings are held between 2pm and 4pm

Venues to be confirmed

## General Paediatric Surgery (GPS) Project

The joint Clinical Leads are:

Mr Oli Gee, Paediatric Surgeon at BCH and Mr Doug Bowley, Consultant Surgeon at Heart of England NHS FT.

Mr Gee attended a meeting held in May at the Royal College of Surgeons (RCS) entitled 'General Paediatric Surgery - Joint Training & Commissioning'. This was well attended by the majority of national bodies who will be taking forward the work nationally.

GPS is one of the four fixed programmes of care that is being overseen by Jackie Cornish, National Clinical Director for Children, Young People, & Transition to Adulthood.

## Paediatric Anaesthetic Network Study Day

The next Study Day will be held on

Friday, 26th February 2016

For further details see the website or contact Lesley Hines: [l.hines@nhs.net](mailto:l.hines@nhs.net)

## PiP Member Organisations

Birmingham Children's Hospital NHS FT • Black Country Partnership NHS FT • Burton Hospitals NHS FT • Dudley CCG • Dudley Group NHS FT  
East Cheshire NHS Trust • George Eliot Hospital NHS Trust • Heart of England NHS FT  
Robert Jones & Agnes Hunt Orthopaedic & District Hospital NHS FT  
Shropshire Community NHS Trust • Shropshire CCG • South Staffordshire & Shropshire Healthcare NHS FT  
The Royal Wolverhampton Hospitals NHS Trust • The Shrewsbury & Telford Hospital NHS Trust  
University Hospital of North Midlands NHS Trust • University Hospitals Coventry & Warwickshire NHS Trust  
Walsall Healthcare NHS Trust • Worcestershire Acute Hospitals NHS Trust

**Ann Bishop**, Staff Nurse at Robert Jones & Agnes Hunt (Orthopaedic hospital), attended the PiP event - **Engaging Children & Young People' in Service Development**, held in March 2014.

Ann came to the event to gain ideas on how she and colleagues could engage more with their paediatric service users. Inspired by the presentations given by **Kath Evans, Karen Higgins and the Shropshire Health Champions (SHCs)**, and colleagues working in other organisations, Ann discussed with colleagues what work could be undertaken in the OPD and on Alice Ward, the paediatric ward.

The nursing director **Julie Roberts, Alison Harper** patient experience lead and Ann met with Karen Higgins. Some of the SHCs walked around the ward, and developed ideas to improve the environment for long stay patients.

**Since March 14, the following events have been held and ideas implemented:**

> Setting up a 'Comments Cloud' - whereby patients plant the 'seed of an idea' - they then can see how the "Plant grows as the idea is implemented!"

> The receptionist hands out 'Child Friendly' comments cards to patients in the OPD. The number of comments received grew from 0 to 60 in one month! 100 % of the comments were complimentary;

> A pre-op system; the children and young people come into the Trust on a Monday to talk to ward nurses, meet the Consultant who will undertake the surgery and talk with the recovery staff about their journey to theatres;

> Responding to comments from patients, staff have changed how they use surgical masks; patients are given a mask before surgery to decorate and flavoured lip balm is used on the inside of the mask to disguise the taste and smell of the anaesthetic.

**The SHCs are continuing to support the work at the Trust:**

- The '15 Steps challenge' is being implemented - to be undertaken on Alice Ward and the OPD on a monthly basis

- A 'Child Friendly' comments card is being produced - for the inpatient area and OPD (for ages 13-18)

- Results of the work is recorded as 'Patient Experience Metrics' and reported to the Trust Board

**Suzanne Marsden, Ward Manager**, says that this work has clearly had benefits for the children and young people who have surgery, attend the OPD or are inpatients. It is also proving worthwhile for staff who like to feel appreciated for the hard work they do - they feel proud to receive the positive feedback.

**For more information, please contact Ann:**

[Ann.Bishop@rjah.nhs.uk](mailto:Ann.Bishop@rjah.nhs.uk)



Comments Cloud on Alice Ward



Ann Bishop - Staff Nurse



Suzanne Marsden - Ward Manager

### PiP Member Organisations

Birmingham Children's Hospital NHS FT • Black Country Partnership NHS FT • Burton Hospitals NHS FT • Dudley CCG • Dudley Group NHS FT  
 East Cheshire NHS Trust • George Eliot Hospital NHS Trust • Heart of England NHS FT  
 Robert Jones & Agnes Hunt Orthopaedic & District Hospital NHS FT  
 Shropshire Community NHS Trust • Shropshire CCG • South Staffordshire & Shropshire Healthcare NHS FT  
 The Royal Wolverhampton Hospitals NHS Trust • The Shrewsbury & Telford Hospital NHS Trust  
 University Hospital of North Midlands NHS Trust • University Hospitals Coventry & Warwickshire NHS Trust  
 Walsall Healthcare NHS Trust • Worcestershire Acute Hospitals NHS Trust



## Young People Health & Wellbeing Framework Event

Feedback from event held on 5th June 2015

Public Health England (PHE) in the West Midlands is committed to supporting stakeholders in developing an integrated and holistic approach to addressing the health and wellbeing needs of young people.

The one day event brought together key partners from across the wider public health system, including commissioners and service providers, to share experiences.

The overwhelming message from the day was that young people's mental and physical health needs are intertwined - and that we need to support them in a holistic manner. The presentations can be accessed:

[http://www.lfphwm.org.uk/library/recent-events/phe\\_cyp\\_15?limitstart=0](http://www.lfphwm.org.uk/library/recent-events/phe_cyp_15?limitstart=0)

Julia led one of the afternoon workshops and shared the film produced by 'Fixers' - 'Behind the Curtain'. This is based on one young patient's negative experience of hospital; the video aims to encourage doctors and nurses to see things from the patient's experience - to "consider, empathise and understand" and to communicate better with young people.

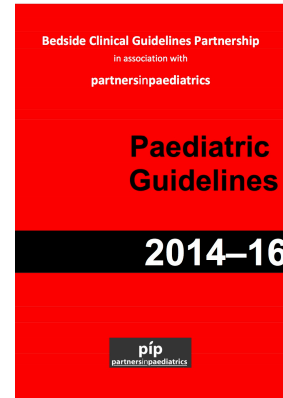
The young person, Hannah, is one of the Shropshire Health Champions. The film can be accessed via the Fixers' website - then type in 'Behind the Curtain'.

[www.fixers.org.uk/home/news.php](http://www.fixers.org.uk/home/news.php)

### PAEDIATRIC GUIDELINES

If you would like to be involved in the development of any of the current guidelines - or develop a new guideline please contact Naveed Mustfa:

[Naveed.Mustfa@uhns.nhs.uk](mailto:Naveed.Mustfa@uhns.nhs.uk)



## PAEDIATRIC GUIDELINES 2014 - 2016

Copies of the 6th Edition of the Guidelines have now been circulated.

### Update of NICE Accreditation of the Guidelines:

PiP continues to work in partnership with the Bedside Clinical Guidelines Partnership (BCGP) to develop the Paediatric Guidelines.

Two representatives of the Guidelines Editorial Board attended the Accreditation Advisory Committee meeting in May. Although the Committee recognised the Guidelines produced were of a high quality, they required more information and clarity around some of the 'process' areas; the decision therefore was not to 'accredit' at this stage.

The Editorial Board are now gathering the additional information required and will re-submit their application at a later date.

A further meeting with NICE staff has been arranged in the near future, as the staff are keen to support and progress this work.

We are pleased to report that we have received two expressions of interest from Consultant Paediatricians to join the Editorial Board. We will update the position in the next Newsletter.

The Clinical Lead for the BCGP is Naveed Mustfa:  
[Naveed.Mustfa@uhns.nhs.uk](mailto:Naveed.Mustfa@uhns.nhs.uk)

The Lead editor for Paediatrics is Paddy McMaster:  
[Paddy.McMaster@pat.nhs.uk](mailto:Paddy.McMaster@pat.nhs.uk)

### PiP Member Organisations

Birmingham Children's Hospital NHS FT • Black Country Partnership NHS FT • Burton Hospitals NHS FT • Dudley CCG • Dudley Group NHS FT  
East Cheshire NHS Trust • George Eliot Hospital NHS Trust • Heart of England NHS FT  
Robert Jones & Agnes Hunt Orthopaedic & District Hospital NHS FT  
Shropshire Community NHS Trust • Shropshire CCG • South Staffordshire & Shropshire Healthcare NHS FT  
The Royal Wolverhampton Hospitals NHS Trust • The Shrewsbury & Telford Hospital NHS Trust  
University Hospital of North Midlands NHS Trust • University Hospitals Coventry & Warwickshire NHS Trust  
Walsall Healthcare NHS Trust • Worcestershire Acute Hospitals NHS Trust



## Forum for Children's Commissioners

**The first meeting of this Forum was held on  
22nd September at Dudley CCG**

PiP and the SCN (Maternity and Children) are working together to facilitate this Forum, which is chaired by Tim Horsburgh.

The aim is to "provide a platform to bring together Commissioners\* of the West Midlands, to promote a better understanding of children and young people's health needs and services, aid effective commissioning and ensure consistency in practice / projects across the region".

Commissioners from CCGs and Public Health attended; it is anticipated that Commissioners from social care and education will participate in ongoing work.

During the meeting the proposed Aim and objectives of the Forum were discussed. A brainstorming exercise was undertaken so that those present could actively influence future work.

There was general agreement that the proposed Aim and objectives were correct. A key message from the meeting was that there is a need for Commissioners to provide peer support and have the opportunity to share examples of good practice and ways of working - with the overall aim of improving outcomes for children and young people across the region.

Developing robust 'Needs analyses' was identified as a particular area for collective work and work is now being undertaken in this area.

The priority areas to progress, which were identified during the meeting, will be shared and discussed at the next meeting. (Date to be confirmed).

\* **All Commissioners** - from across health, public health, social care and education.

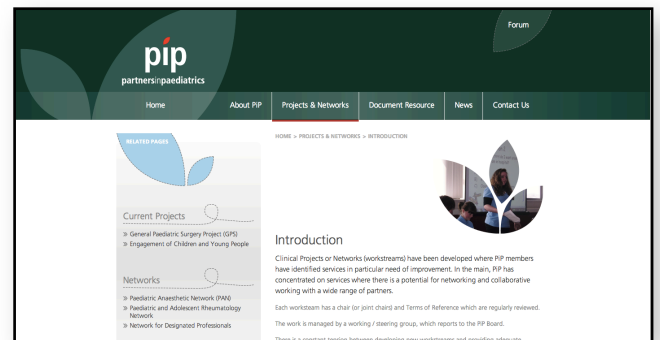
## The PiP Website

**We would welcome your comments on the website - please have a look and let us know what you think...**

### How can it be improved?

The aim is that the website is a 'repository' for examples of 'good practice' and that it can be used for advertising any educational events that are taking place around the region.

[www.partnersinpaediatrics.org](http://www.partnersinpaediatrics.org)



**Do you have examples of good practice - or a new service in your organisation - that you would like to share?**

**An example of sharing experience of good practice.....**

Dudley CCG are aiming to implement a Young Health Champion scheme across the Borough and a similar event to the Dudley #MeFestival is being planned in Shropshire!

**If you would like to include anything in future newsletters, or would like examples of 'good practice' put on the website, please contact  
Julia Greensall or Lesley Hines.**

### PiP Member Organisations

Birmingham Children's Hospital NHS FT • Black Country Partnership NHS FT • Burton Hospitals NHS FT • Dudley CCG • Dudley Group NHS FT  
East Cheshire NHS Trust • George Eliot Hospital NHS Trust • Heart of England NHS FT  
Robert Jones & Agnes Hunt Orthopaedic & District Hospital NHS FT  
Shropshire Community NHS Trust • Shropshire CCG • South Staffordshire & Shropshire Healthcare NHS FT  
The Royal Wolverhampton Hospitals NHS Trust • The Shrewsbury & Telford Hospital NHS Trust  
University Hospital of North Midlands NHS Trust • University Hospitals Coventry & Warwickshire NHS Trust  
Walsall Healthcare NHS Trust • Worcestershire Acute Hospitals NHS Trust



**Mollie Wilson** - CEO of the Paediatric Society in New Zealand (left) with Julia Greensall.

In August, we welcomed Mollie to the UK for her annual visit. When Mollie was first establishing networks in New Zealand (around 2004) she used the early work undertaken by Dr Andy Spencer (PiP's first Clinical Lead) and Steve Cropper to look at issues in relation to the governance and structure of networks. Although the way networks are funded in NZ is different to the UK (they are directly funded from the Ministry of Health) many of the issues are similar.

Mollie met with Mary Montgomery (ACMO for Networks at BCH), and discussed the role of specialist centres in developing networked services.

She also met with Tim Horsburgh. Several issues, common to the UK and NZ were explored - including integration between service sectors, and new models of care being developed. Mollie was particularly interested in looking at the integration of services between primary and secondary care and Tim shared the work that is being undertaken in Dudley (and other areas across the region).

For more information about the NZ National Child and Youth Clinical Networks, the website is:

[www.starship.org.nz/for-health-professionals/national-child-and-youth-clinical-networks](http://www.starship.org.nz/for-health-professionals/national-child-and-youth-clinical-networks)

## Cerebral Palsy & Spasticity Network

This Network is organising a Study Day - to be held on **18th November** at the RICOH arena.

The event is aimed at Consultants, doctors in training, nurses, physiotherapists and occupational therapists.

### The main objectives are to:

- inform members of the multidisciplinary team about the latest updates in the treatment of children with spasticity
- Learn about the Cerebral Palsy Integrated Pathway and how it may be implemented in the West Midlands
- Discuss current and future clinical research projects in the field of cerebral palsy and spasticity

The Cost of the day is **£35.00**

The RCPCH has approved this activity for up to **6 CPD** points, in accordance with the current RCPCH CPD Guidelines.

**For more Information or to book your place**, please contact Angela Whitmore at:

[angela.whitmore@uhcw.nhs.uk](mailto:angela.whitmore@uhcw.nhs.uk)

or Lesley Hines at: [l.hines@nhs.net](mailto:l.hines@nhs.net)

### New email addresses for Liz, Tim and Julia

Liz Nicholson, Chair

[liz@partnersinpaediatrics.org](mailto:liz@partnersinpaediatrics.org)

Tim Horsburgh, Clinical Lead

Tim Horsburgh [tim@partnersinpaediatrics.org](mailto:tim@partnersinpaediatrics.org)

Julia Greensall, Network Manager

[julia@partnersinpaediatrics.org](mailto:julia@partnersinpaediatrics.org)

Steve Cropper, Academic Advisor

[s.a.cropper@keele.ac.uk](mailto:s.a.cropper@keele.ac.uk)

Lesley Hines, Project Support

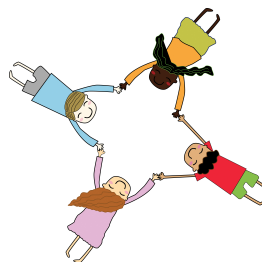
[l.hines@nhs.net](mailto:l.hines@nhs.net)

### Correspondence can be sent to:

Friars Gate  
1011 Stratford Road  
Shirley, Birmingham, B90 4BN

Office telephone number:

**0121 746 4461**



### PiP Member Organisations

Birmingham Children's Hospital NHS FT • Black Country Partnership NHS FT • Burton Hospitals NHS FT • Dudley CCG • Dudley Group NHS FT  
East Cheshire NHS Trust • George Eliot Hospital NHS Trust • Heart of England NHS FT  
Robert Jones & Agnes Hunt Orthopaedic & District Hospital NHS FT  
Shropshire Community NHS Trust • Shropshire CCG • South Staffordshire & Shropshire Healthcare NHS FT  
The Royal Wolverhampton Hospitals NHS Trust • The Shrewsbury & Telford Hospital NHS Trust  
University Hospital of North Midlands NHS Trust • University Hospitals Coventry & Warwickshire NHS Trust  
Walsall Healthcare NHS Trust • Worcestershire Acute Hospitals NHS Trust